

house+ design

RIAI

The Registration Body for Architects in Ireland

Be creative with your home.

Ireland's magazine for architect-designed homes and interiors

€4.95 / £4.00 Issue 06 - 2021

Discover 17+ Inspiring Irish Homes

- + The Flexible Home for Living, Working & Joy
- + Life in Colour - At Home with Declan O'Donnell
- + Space-Savers for Apartments
- + Relaxing in Roof-Gardens
- + Working with an Architect - RIAI Advice

+ Extensions that Make
your Home Work for you

+ The Flexible Home
by Architect
Amanda Bone

+ Design News





01. A contemporary style home with a unique flat-roofed design
02. The simple palette of materials consists of simple white-rendered walls, punctuated by glazing in dark metal frames around the house

Architects
Flavio Lombardo
Architects

Location
Co. Dublin

Text by
Mark Costello

Photography
Flavio Lombardo

A Solid Home in the Landscape.

Set on a generous site in the gently rolling and verdant landscape of north county Dublin, this strikingly modern house is the product of a creative synergy between clients and architect who have succeeded in making a fine family home.



Architect's Top Tips

1. Maximise all light and landscape views through careful orientation of the house and space.
2. Spend time to develop a well-defined client brief.
3. Detailed design from the early stages of the build.

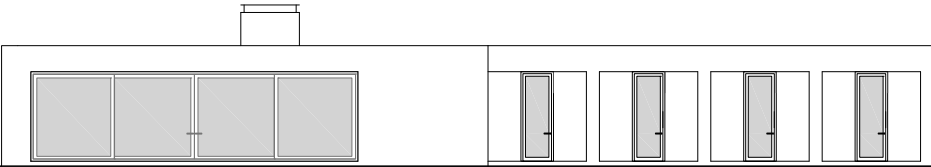
When contemplating the design of their new home, the clients felt they wanted an unmistakably contemporary style that differed from the norm of many houses to be seen around rural county Dublin. With this in mind they contacted Registered Architect Flavio Lombardo on the basis of a referral from one of his previous projects.

The clients' initial brief sought accommodation for a family of five centred on an open-plan kitchen-diner and living room but with a second separate living space; there were to be four bedrooms with two en-suites, a main bathroom, a separate toilet and a utility room. After his appointment, on the basis of an RIAI Client and Architect Agreement, Flavio Lombardo developed the project brief in dialogue with the clients,

balancing the scale of accommodation against an estimated overall cost.

The clients liked a flat-roofed design and the architect developed proposals, using plans, sections and elevations, supported by photographs of relevant built examples researched specifically for the project. In the final design, the main axis of the house is aligned north-south, with the front entrance facing west towards a public road and a large sliding glass living room door facing east towards an open rural landscape.

This orientation provides the main kitchen-diner with natural light all day, as the sun moves around the house. The form is composed of three interlocking rectangular blocks containing, firstly, an entrance, utility space, a guest room and a small living room; secondly, a large kitchen-diner and living space; and, thirdly, family bedrooms.



East elevation

“The limited palette of materials agreed between architect and client consists of simple white-rendered walls, punctuated by glazing in dark metal frames.”



03. The exterior features deep recesses at external doors and windows

Windows, doors and roof lights
Reynaers / The Folding Door Company

Sanitary ware & tiles
BathHouse

Timber floor
Bearfoot Floors

Roof
Moy Materials Ltd

Insulation
Xtratherm Ltd

Internal doors & joinery
DC Joinery

Ironmongery
Proline Hardware Ltd

Lighting
Astro Lighting

Steel Sub-contractor
MDH Engineering

The exterior architectural treatment is simple, almost minimal, featuring deep recesses at external doors and windows to admit low-level winter sun, while providing shade from high summer sun. Aside from creating shelter, these recesses also create plays of light and shadow across the façade. The limited palette of materials agreed between architect and client consists of simple white-rendered walls, punctuated by glazing in dark metal frames.

After the client approved the scheme design, full planning permission was obtained and this process was facilitated by the pre-existence of an outline permission which had already established the principle of a development on the site. Conventional cavity external wall construction was chosen on the basis of its widespread use in Ireland and thus, its economy; but also for its ability to give a feeling of solidity and mass in a building. As for the flat roof, this was designed with a straightforward, mainly timber structure but with steel members for long spans. The roof incorporates a void to allow for the horizontal distribution of a mechanical ventilation with heat recovery

(MVHR) system. This design was calibrated with expected heat loss and solar gain at window and doors.

An air-source heat pump was selected to partner underfloor space heating throughout the house and these, together with air-tightness which was tested, contributed to a BER A2 rating. The architect administrated a standard RIAI building contract and, after a 13 month duration, the house was successfully completed.

Interior spaces are calm, with a neutral colour scheme throughout: white painted walls directing light into the interior are complimented by oak floors, dark grey doors, joinery and wall panelling in circulation spaces. Ceilings are high and floor-to-ceiling windows allow views from the interior to the surrounding landscape; similarly high external doors provide access to outdoor patios on the south and east sides. Architect Flavio Lombardo emphasises that while the interior is simple, everything is designed carefully to create an effortless simplicity, an uncomplicated but comfortable background to family life. For the architect, the solidity of the design evokes the symbolic solidity of a family.

Client Must-Haves

- + A new home with an unmistakable contemporary style and one which differed from the norm of many houses to be seen around rural county Dublin.
- + An open-plan kitchen-diner and living room.
- + A flat-roofed modern house.



04.



06.



- 04. Interior spaces are complemented by oak floors
- 05. The orientation provides natural light, as the sun moves around the house
- 06. Floor-to-ceiling windows allow views from the interior to the surrounding landscape
- 07. A flower bed provides a new colorful look
- 08. While the interior is simple, everything is designed carefully to create an uncomplicated but comfortable background to family life



FLA

Flavio Lombardo Architects

About this Home

Flavio Lombardo Architects

mail@flaviolombardo.com | flaviolombardo.com

Flavio Lombardo Architects is a forward-looking Dublin-based practice committed to design excellence and innovative solutions. The focus of the practice is to mesh contemporary design with strong client relationships to produce high-quality interesting architecture. We place great importance on the way people use buildings, and how buildings affect our sense of well-being. We put a strong attention on the right use of materials, the quality of light and the relationship between the project and its setting. We regard these issues to be more significant than working in a specific style and strive for each project to be an original understanding of the client, site, brief and budget. We specialise in residential architecture such as house design and extensions, conservation and refurbishment.

Site Area 4,914m²

House size 265m²

Duration on site 13 months

Contract use RIAI White Form

BER rating A2

Project value Undisclosed

Main Contractor JM Stenson Ltd

Planning Consultant JG Consulting Planning & Development.

Civil & Structural Engineer MRG Consulting Engineers

M&E Engineer MED Building Services Ltd. Consulting Engineers

Quantities Surveyor John J Casey & Co.

Landscape Consultant Tully Landscape



BESPOKE SOFA



Ireland's Leading Bespoke Sofa Manufacturers

New Galway Store Now Open 43G Briarhill Business Park, Ballybrit, Galway, HP1 PC3N
091 342500

Dun Laoghaire Unit 1 & 2 The Lighthouse, Lr. George's Street, Dun Laoghaire, Co Dublin
01 663 63 63 or 01 663 63 64 or 086 8054950

bespokesofa.ie